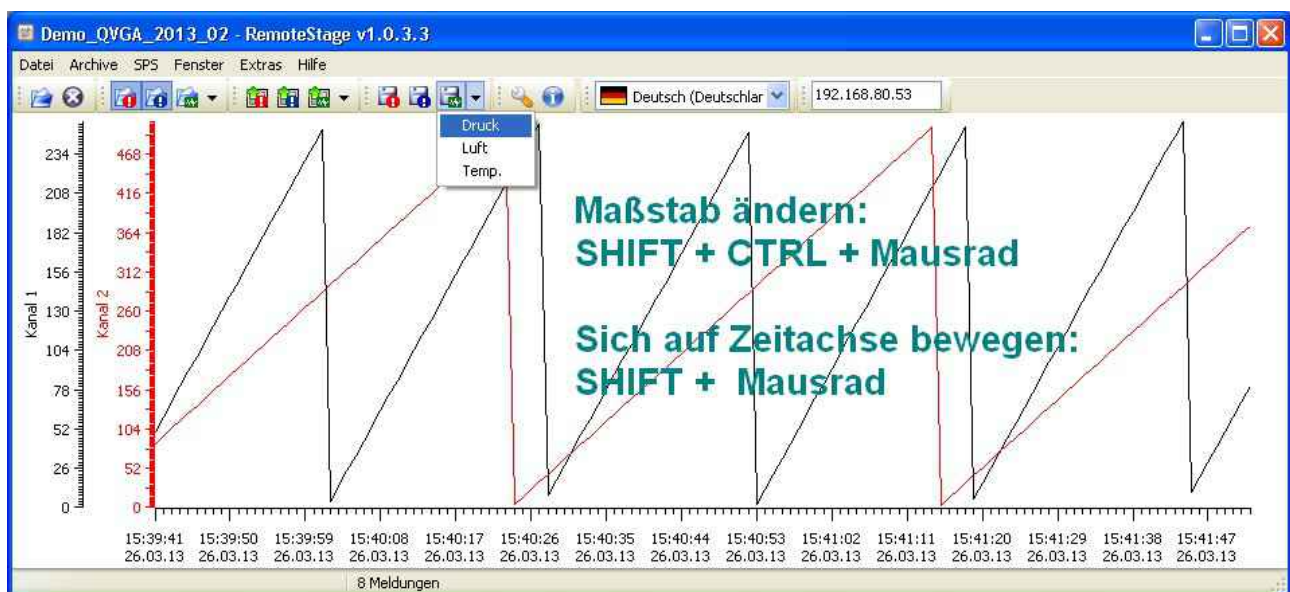


Product information

Remote access software

RemoteStage



The screenshot shows the RemoteStage v1.0.3.6 interface. The 'Datenarchive' window is open, displaying a table of data archives. The table has columns for 'Datenarchivname', 'Erstellt am', 'Geändert am', and 'Größe'.

Datenarchivname	Erstellt am	Geändert am	Größe
ArchiveData102.txt	15.08.2013 18:47:26	25.07.2013 15:03:40	2312
ArchiveData102.bin	15.08.2013 21:06:38	15.08.2013 21:07:26	92

(valid from 02/2014)

Changes to older versions of this document

Changed in Rev. 1: complete new document from RS 1.0.4.4
Changed in Rev. 2: new design line

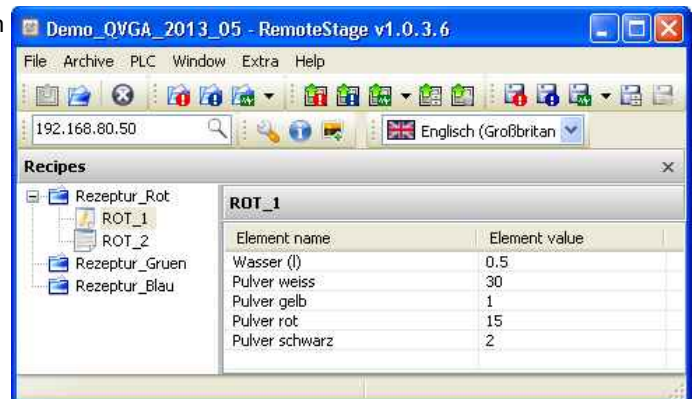


With the free-of-charge software „RemoteStage“ there can be made a remote visualization from the binary of a VisuStage-visualization created before. This program is a portable solution but with lots of functions. It communicates via TCP/IP with the Panel-PLC or Panel-HMI and can import the necessary binary from there as well. By using this binary format no one can read back the source code of your visualization

These archive data as well as recipe records can be read in from the Micro-SD-card of the remote device via Ethernet into the PC:

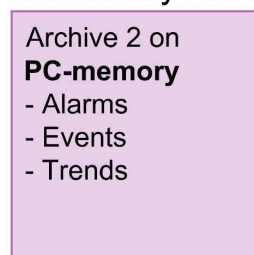
- 1024 alarm archives and 128 event archives (Panel-PLC and Panel-HMI),
- 4 trends with up to 16 channels (Panel-PLC and Panel-HMI),
- 256 recipe records with up to 256 elements (Panel-PLC and Panel-HMI),
- Data (DB) -archives (Panel-PLC and Compact-PLC)

These archives can be displayed and converted into csv-format and stored in the PC. This procedure is also possible as command line in any batch process.



RemoteStage

VisuStage Runtime 2
with binary AAA.vsbin



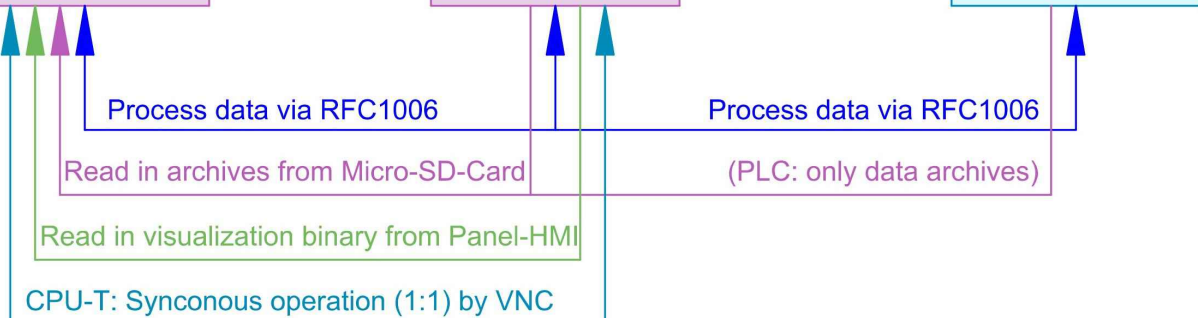
Panel

VisuStage Runtime 1
with Binary AAA.vsbin



S7-PLC

with S7-Program
and actual data



Multiple RemoteStages can be operated in one PC to get a kind of master display with multiple remote screens.

It is possible to download the visualization binary directly by Ethernet from the Panel-PLC / Panel-HMI (See right button). This helps to reduce the organization effort by far. In VisuStage you may assign a PIN-code to protect your visualization against unauthorized uploads.



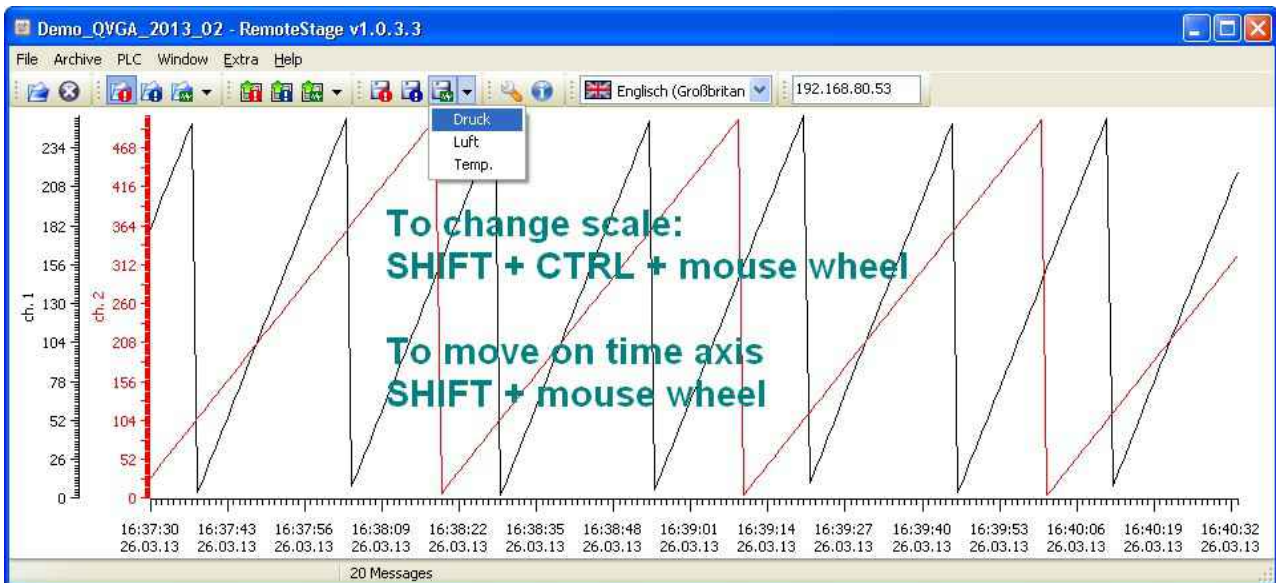
The RemoteStage works **like an additional Panel-HMI** on the remote-PC, what gets the process (actual) data by a TCP/IP-connection straight from the PLC. System data like Time and Buzzer are related to even this PC of course.

This allows a remote visualization and account to external S7-PLCs as well. This is a function nearly similar to WinCC runtime of a remote PC)

In Panel-PLCs and Panel-HMIs with CPU-T a VNC-Server is integrated what allows 1:1 controlling by another PC-monitor or mobile device with a VNC-Client (-Reader) onboard. Therefore no RemoteStage is necessary any more, for settings read more in the manual.

Trend archive viewer and csv-export

Archive data can be read in from Micro-SD-card, displayed on the PC-monitor and exported as csv-file.



Above figure displays all archived trend with name „Druck“ of the Panel-PLC / Panel-HMI with the IP-address 192.168.80.30. The time will be displayed in the Language format you assigned on your PC (here in German = DE)

Recipe display and export

Recipe archive data from Micro-SD-card can be read in, displayed and saved to PC as scv-file.

Left below: list of archived recipes and its records

Element name	Element value
Wasser (!)	0.9
Pulver weiss	65
Pulver gelb	3
Pulver rot	8
Pulver schwarz	3

right below: list of records and its elements

Element name	Element value
Wasser (!)	0.9
Pulver weiss	65
Pulver gelb	3
Pulver rot	8
Pulver schwarz	3

The export as csv-file is like the export at message archives. Pay attention to format the csv-file according to your own needs.

Data (DB) archive display and export

These data (DB) archived over S7-program to Micro-SD-card, can be read in and displayed and stored to the PC as bin (binary) or as txt (csv)-file. The format of the csv-file will be assigned by the S7-program (SFC207) and is not to configure by the RemoteStage. This can be done later on with any table calculation program.

below: display of the data archives available on the Micro-SD-card

Data archive name	Created on	Modified on	Size
ArchiveData102.txt	15.08.2013 18:47:26	25.07.2013 15:03:40	2312
ArchiveData102.bin	15.08.2013 21:06:38	15.08.2013 21:07:26	92

Command line for RemoteStage

RemoteStage can be used in batch process from command line with command line parameters, to save archives somewhere with a self defined name.

Automatic export of messages- (alarms and events) and trend archives

The binaries of the messages and trends (assigned in the VisuStage before and created at runtime) will be read in, converted and stored in a path on the PC.

```
remotestage.exe /mode=<mode> /r=<remote> /o=<output file>
/v=<project binary> /t=<trend number>
```

For example to read in alarm archive from INSEVIS PLC with IP address 192.168.80.50 and write to „d:\archive\alarm.csv“ file with CSV format. You can execute from command

```
C:\>remotestage.exe /mode=alarm_archive /r=192.168.80.50
/o=D:\archive\alarm.csv /v=D:\visu\myvisu.vsbin
```

Automatic export of receipes

The binaries of the (in VisuStage predefined) recipes and the of the records (created in runtime by the operator or by SFC206 from the S7-program) will be read in, converted and stored in a path on the PC.

```
remotestage.exe /mode=recipe /r=<remote> /v=<project binary> /recipe=<recipe name>
/record=<record name> /o=<output file> /format=csv
```

To read in e.g. a single recipe record „Orange“ from the recipe „Rezeptur_Rot“ from the INSEVIS Panel-PLC with the IP-address 192.168.80.50 and to store it as csv-file to „D:\archive\“ this command line is required:

```
C:\>remotestage.exe /mode=recipe /r=192.168.80.50 /v=d:\visu\myvisu.vsbin
/recipe=Rezeptur_Rot /record=Orange /o=D:\archive\Orange.csv
```

To read in e.g. ALL recipe records from the recipe „Rezeptur_Rot“ from the INSEVIS Panel-PLC with the IP-address 192.168.80.50 and to store it as csv-file to „D:\archive\“ this command line is required:

```
C:\>remotestage.exe /mode=recipe /r=192.168.80.50 /v=d:\visu\myvisu.vsbin
/recipe=Rezeptur_Rot /o=D:\archive /format=csv
```

Automatic export of data (DB-) archives

This function copies the data(DB-) archives created by S7-program with SFC207 to the requested target path into the PC. A modification of the csv-format is not possible.

```
remotestage.exe /mode=data_archive /r=<remote>
/archive=<archive file> /o=<output file>
```

To read in e.g. a data (DB-) archive „Test-DB“ from the INSEVIS Panel-PLC with the IP-address 192.168.80.50 and to store it as csv-file to „D:\archive\Testdaten.csv“ this command line is required:

```
C:\>remotestage.exe /mode=data_archive /r=192.168.80.50
/archive=Test-DB /o=D:\archive\Testdaten.csv
```

Copyright

This and all other documentation and software, supplied or hosted on INSEVIS web sites to download are copyrighted. Any duplicating of these data in any way without express approval by INSEVIS GmbH is not permitted.

All property and copy rights of these documentation and software and every copy of it are reserved to INSEVIS GmbH.

Trade Marks

INSEVIS refers that all trade marks of particular companies used in own documentation are reserved trade marks are property of the particular owners and are subjected to common protection of trade marks.

Disclaimer

All technical details in this documentation were created by INSEVIS with highest diligence. Anyhow mistakes could not be excluded, so no responsibility is taken by INSEVIS for the complete correctness of this information. This documentation will reviewed regularly and necessary corrections will be done in next version.

With publication of this catalog all other versions are no longer valid.